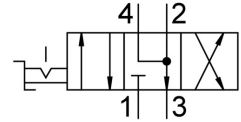
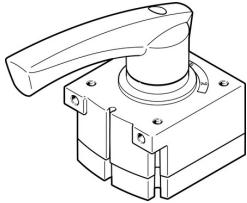


Hand lever valve VHER-H-B43E-B-G18

Part number: 3488207

FESTO



Data sheet

| Feature | Value |
|--|---|
| Valve function | 4/3, exhausted |
| Actuation type | Manual |
| Width | 42 mm |
| Standard nominal flow rate | 800 l/min |
| Pneumatic working port | G1/8 |
| Operating pressure | 0 bar ... 10 bar |
| Information on operating pressure | Vacuum operation at connection 3 only In dual pressure mode, the pressure at connection 1 must be higher than at connection 3. |
| Structural design | Rotary gate valve |
| Nominal width | 6 mm |
| Type code | VHER |
| Exhaust air function | With flow control option |
| Application note | Operate by hand only |
| Sealing principle | Hard |
| Type of control | Direct |
| Flow direction | Non-reversible |
| Symbol | 00995941 |
| Underlap | yes |
| Switching position indication | with accessories |
| Operating medium | Compressed air as per ISO 8573-1:2010 [7:4:4] |
| Information on operating and pilot media | Operation with oil lubrication possible (required for further use) |
| Corrosion resistance class (CRC) | 2 - Moderate corrosion stress |
| Temperature of medium | -20 °C ... 80 °C |
| Ambient temperature | -20 °C ... 80 °C |
| Actuating torque | 0.9 Nm |
| Product weight | 220 g |
| Type of mounting | Optionally: Front panel mounting With through-hole |
| Pneumatic connection 1 | G1/8 |
| Pneumatic connection 2 | G1/8 |
| Pneumatic connection 3 | G1/8 |
| Pneumatic connection 4 | G1/8 |
| Note on materials | Free of copper and PTFE RoHS-compliant |
| Seals material | NBR |

| Feature | Value |
|------------------|-------------------|
| Housing material | Die-cast aluminum |
| Lever material | Die-cast aluminum |